

Folder includes:

Removed  
to  
Audio/Video  
Box

- 1 news reel "Rainer Picnic"
- 2 roles undeveloped film
  - 1- "Jim Power"
- 1 reel film - contents unknown
- 1 roll developed negatives

7 - 2x10 sheets negatives 20.1-25-429 thru

436

"July 1974

Lake Sammamish - Rainer Picnic

Lockhead Picnic

Mark Clene [enge?]"

Mark T. Clevenger  
11620 104th N.E.  
Kirkland WA 98033  
(206) 828-0737

December 26, 1978

Lt. Chase  
King County Police

Attached are the rough proofs and negatives about which I spoke to you.

As I told you, I took b&w photos, 35 mm slides, and motion pictures of the Lockheed Shipbuilding picnic. I then moved around the park taking a variety of overall and scenic shots of the park and beachfront since it was a beautiful day.

It was my understanding that Lockheed made the material available for inspection by your department.

However, as I also indicated to you, one roll of film and its proofs were misplaced and recently turned up when I was trying to straighten out some files.

I apologize for the quality of the proof but didn't think it necessary to remake.

It is hard to spot resemblances of people portrayed in newspaper photographs and the proofs may mean little or nothing, but felt it might be useful to inspect at least one picture in particular, in which a subject is circled.

Incidentally, the car in Frames 7 & 8 was an odd color that might be termed a metallic brown.

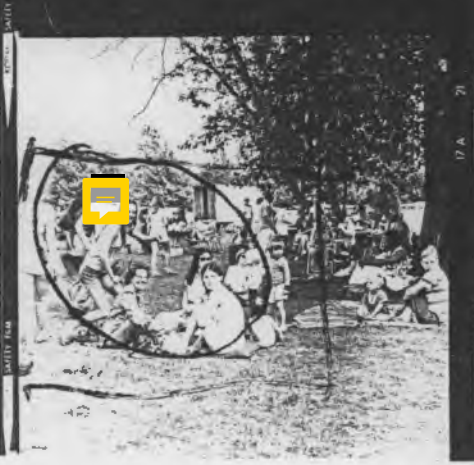
I don't have any immediate need for the negatives, but would like to have them returned when you are finished with them. Perhaps one of the other frames may reveal something of interest unascertainable by me.

Sincerely,

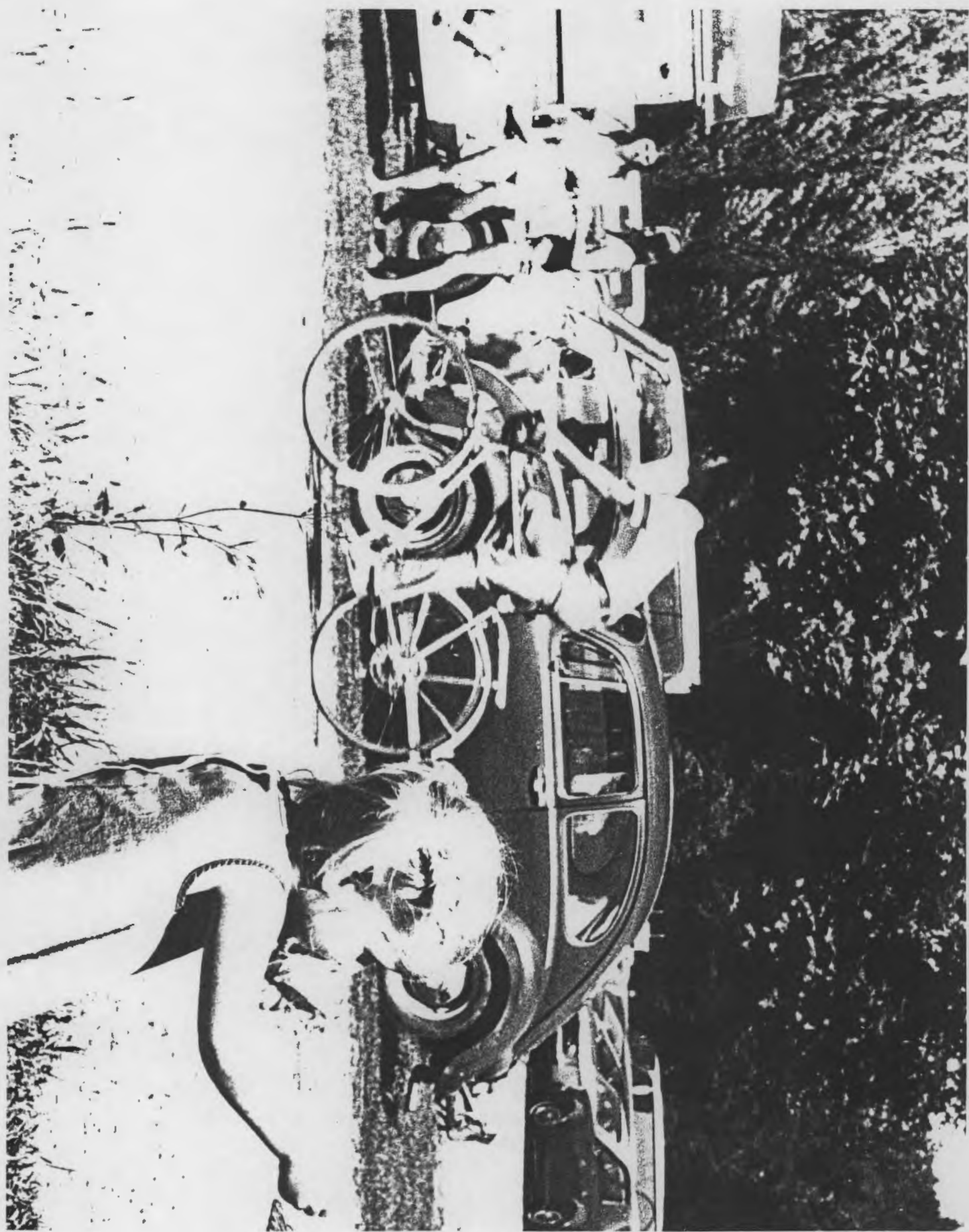
Sincerely,

*Mark Clevenger*  
Mark Clevenger





20.11.25-439





201-25-440





201-25-441

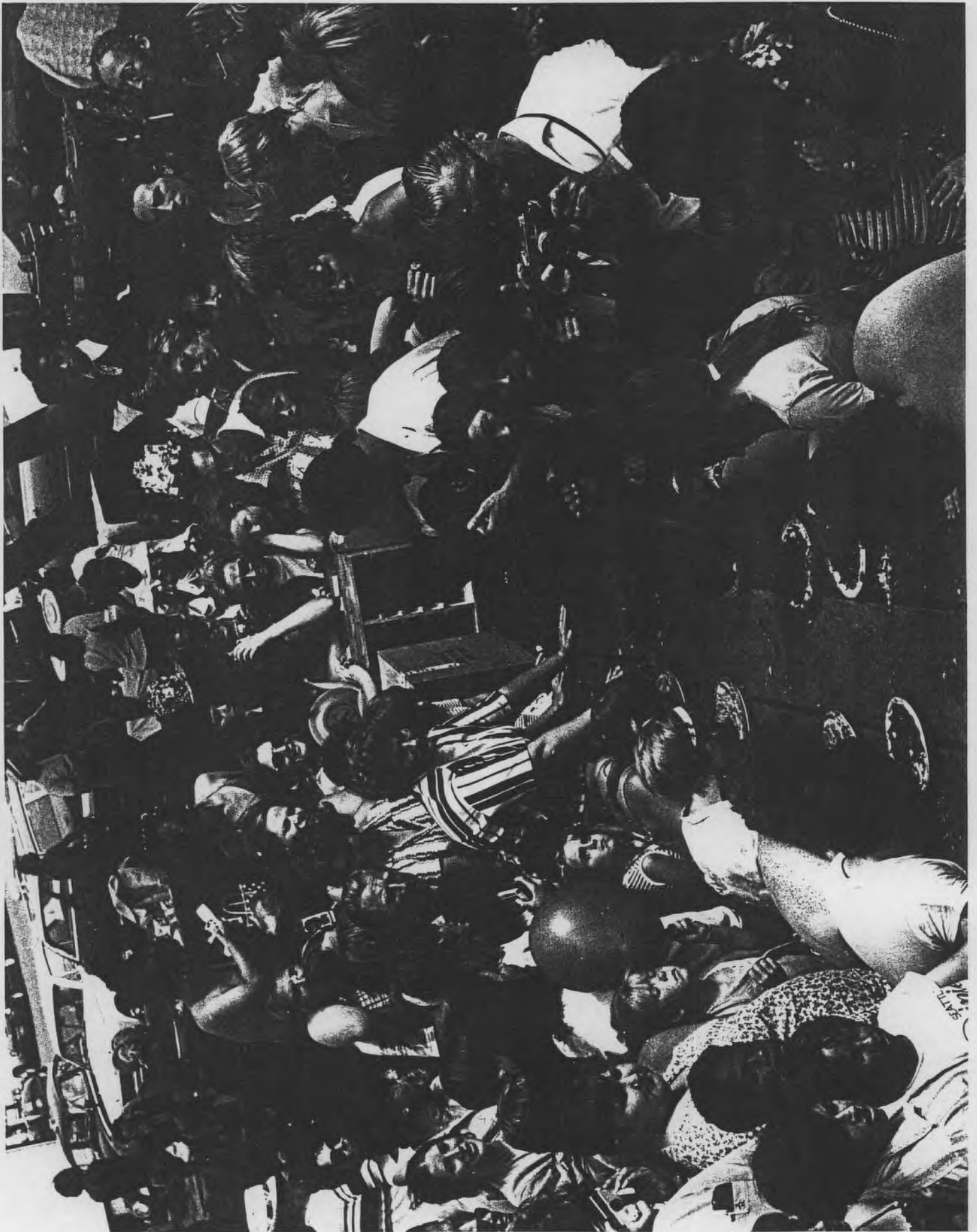




20.1-25-442



201-25-443





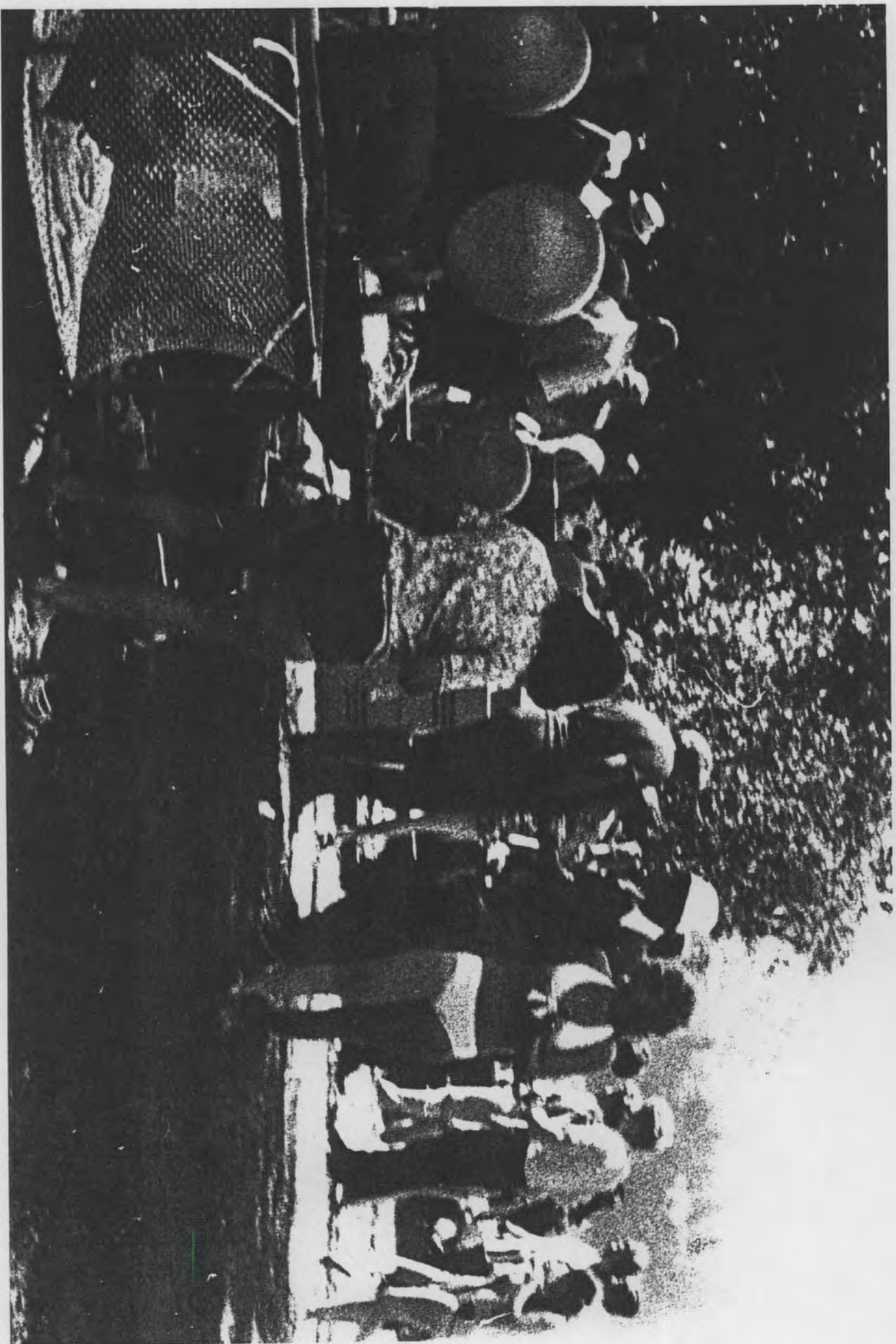
201-25-444



201-25-445







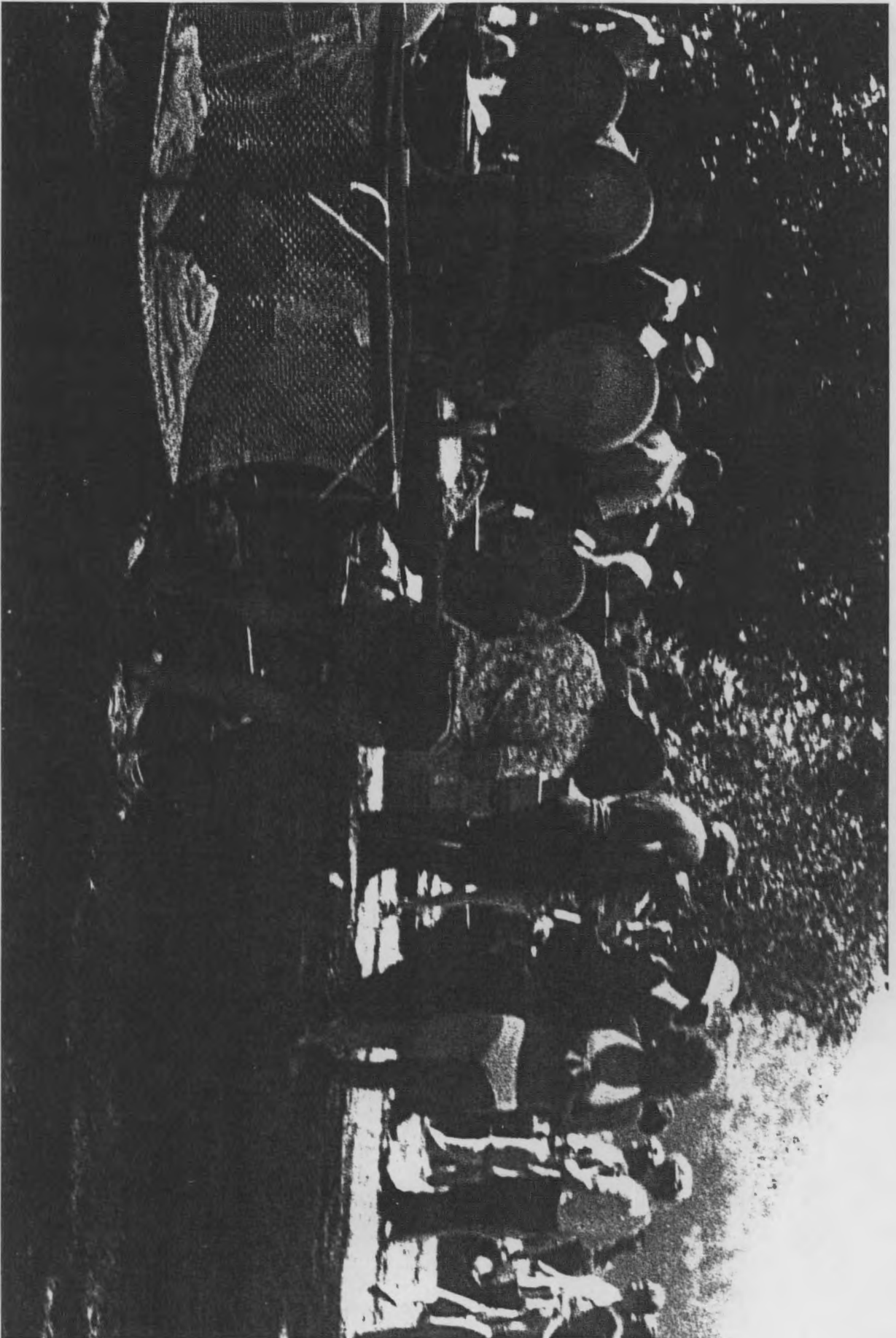
20.1-25-446



201-25-447







20.1-25-440



2011-25-449





2011-25-449



from 20-36-2





20.1-25-456



20.1-25-451



SAFETY FILM



SAFETY FILM



SAFETY FILM



SAFETY FILM



SAFETY FILM



SAFETY FILM



SAFETY FILM



SAFETY FILM